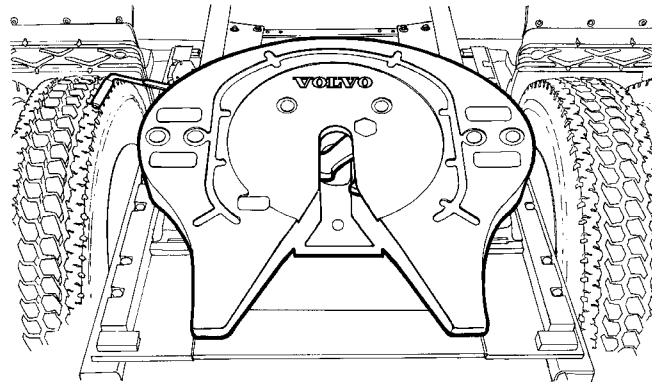


Fifth Wheel Air Release VN

Fifth Wheel Air Release



W8001449

The following bulletin contains pertinent Fifth Wheel Air Release information for VN vehicles. Use this information as a reference for any Fifth Wheel Service procedures on VN vehicles.

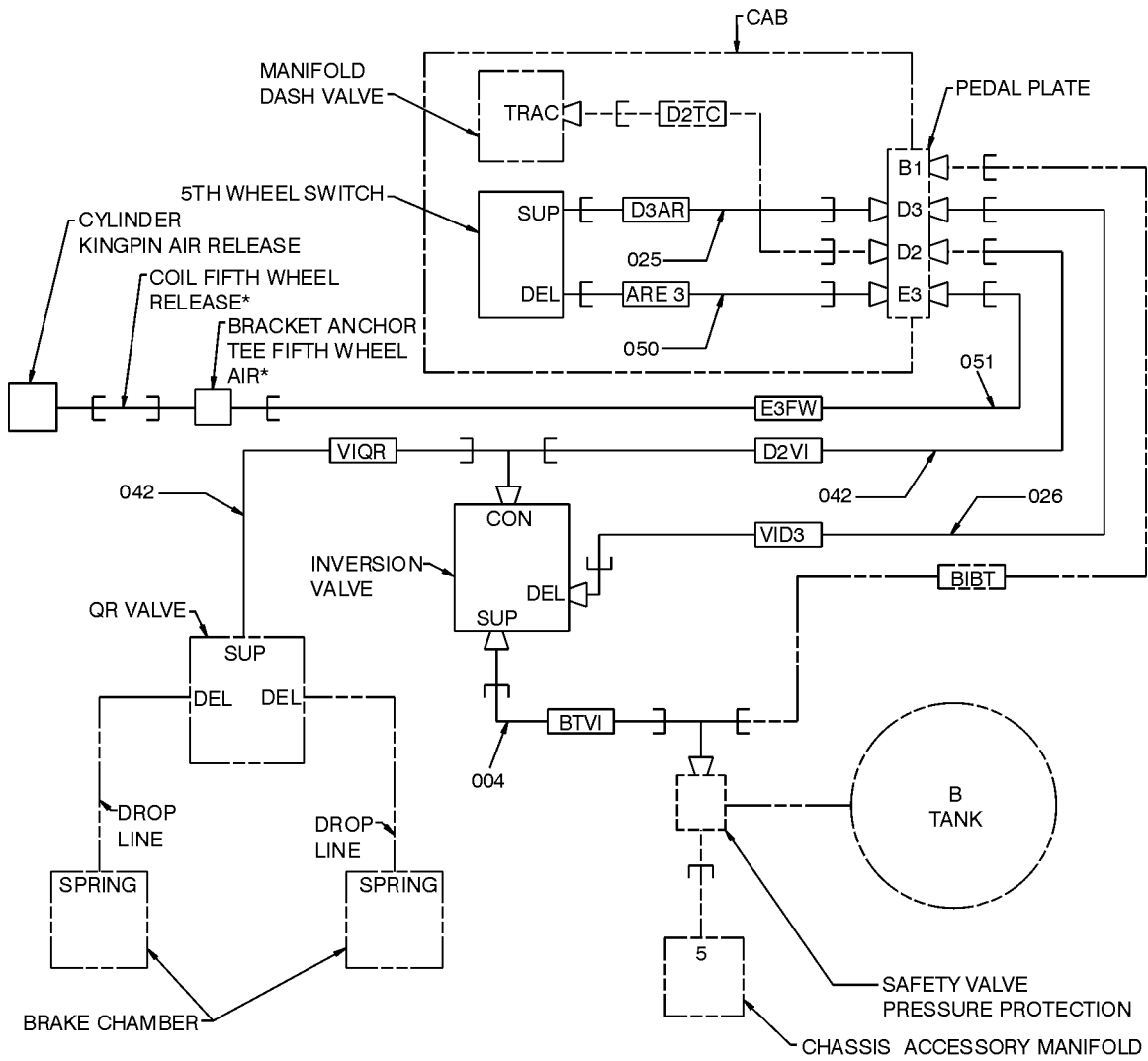
For further information concerning the Fifth Wheel refer to Service Manual 922-620, Fifth Wheel-ASF, All Models, Publication Number PV776-TSP25581/1, Publication date 1.1999.

Contents include:

- ["Fifth Wheel Air Release Schematic" page 2](#)
- ["Fifth Wheel Air Release Routing" page 3](#)
- ["Air Slide Fifth Wheel with Touchloc" page 4](#)
- ["Fifth Wheel Kingpin Lock Air Release Switch" page 5](#)
- ["Fifth Wheel Air Control System" page 6](#)

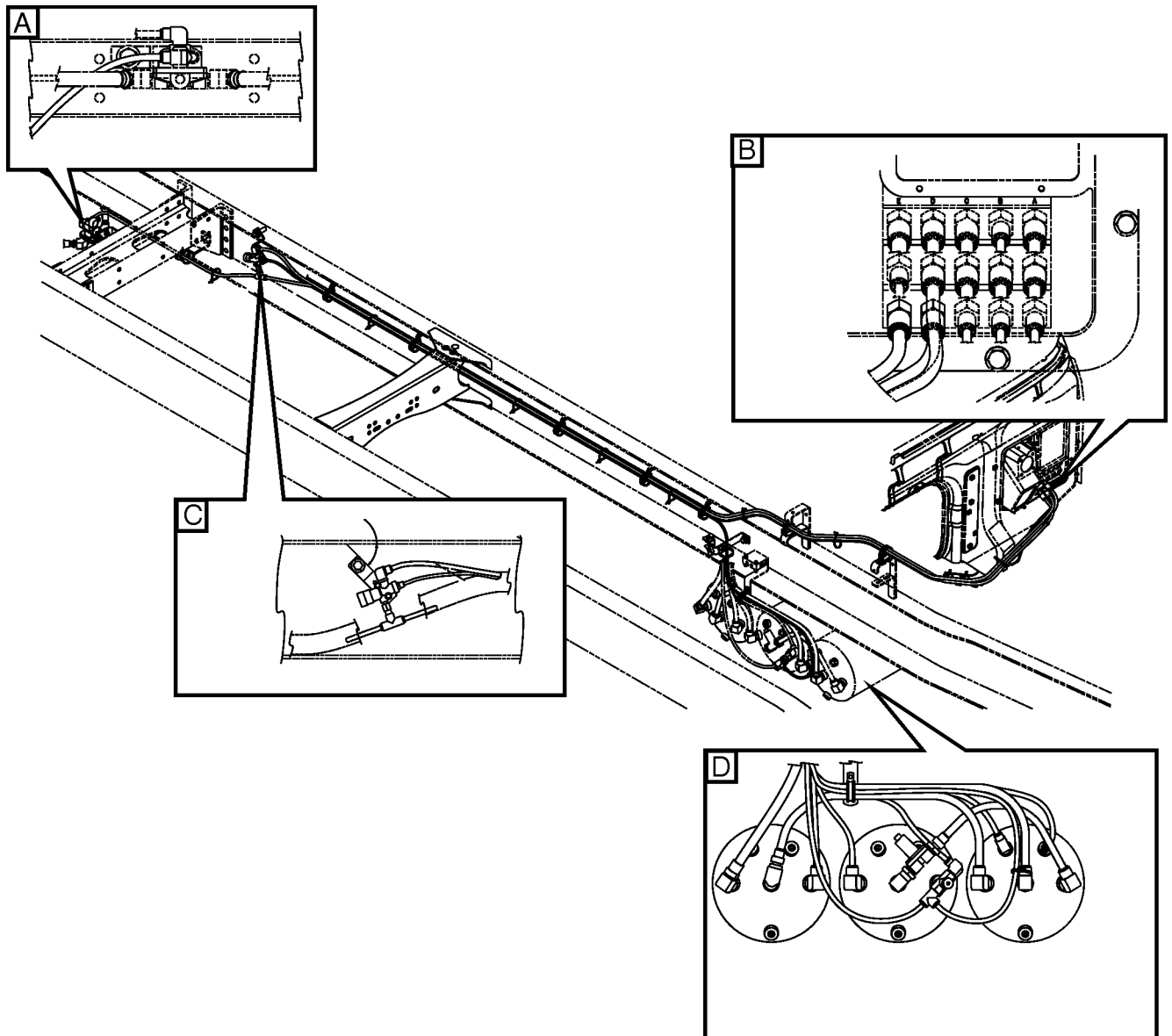
Fifth Wheel Pneumatics

Fifth Wheel Air Release Schematic



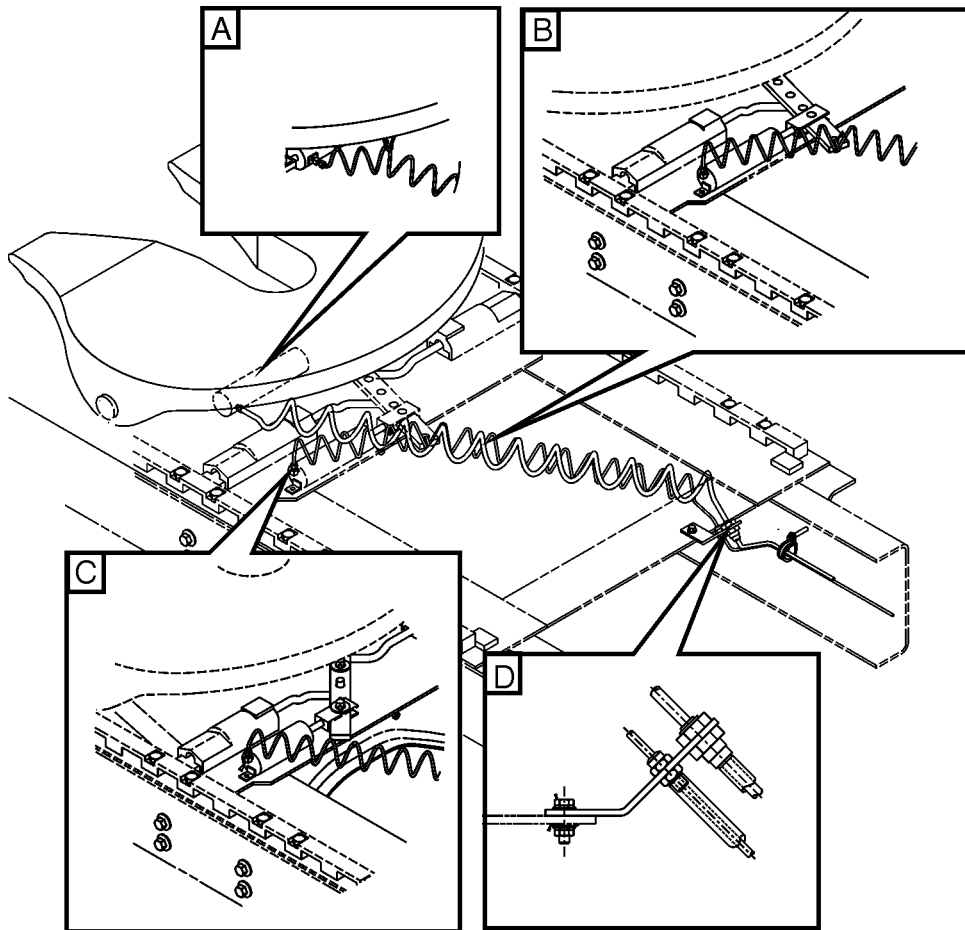
W9000501

Fifth Wheel Air Release Routing



- A Quick Release Valve
- B Dash Connections
- C Relay Valve
- D Air Tank Connections

Air Slide Fifth Wheel with Touchloc

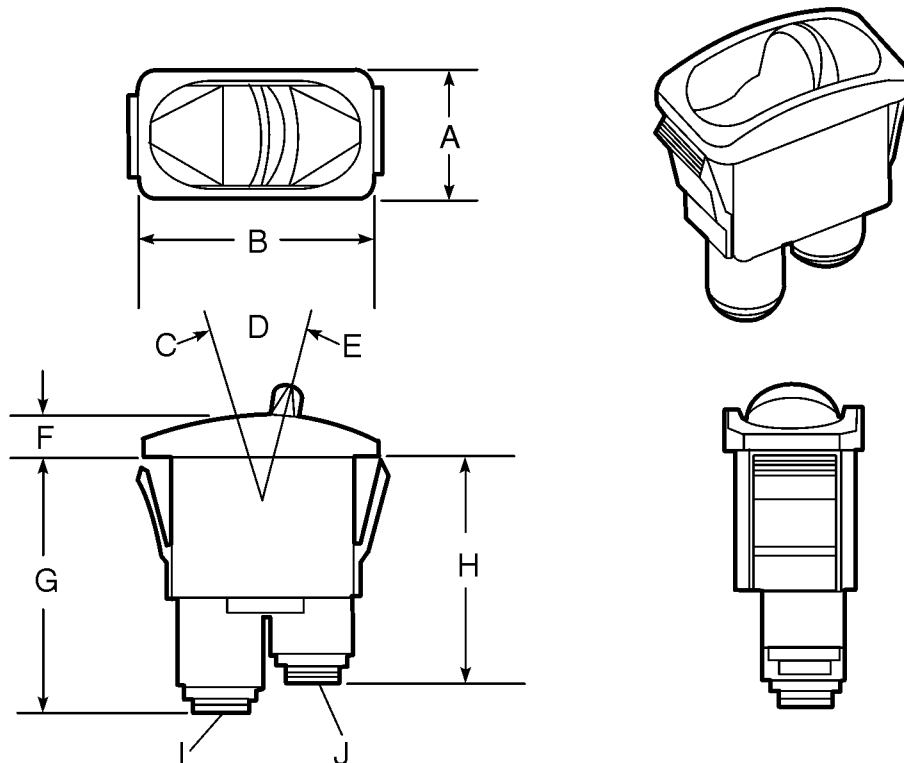


W9000497

- A Air Supply Line (Holland)
- B Air Supply Line (Fontaine)
- C Air Supply Line (ASF)
- D Tightening Torque

Note: For torque specifications refer to Service Manual 922-620, Fifth Wheel-ASF, All Models, Publication Number PV776-TSP25581/1, Publication date 1.1999.

Fifth Wheel Kingpin Lock Air Release Switch



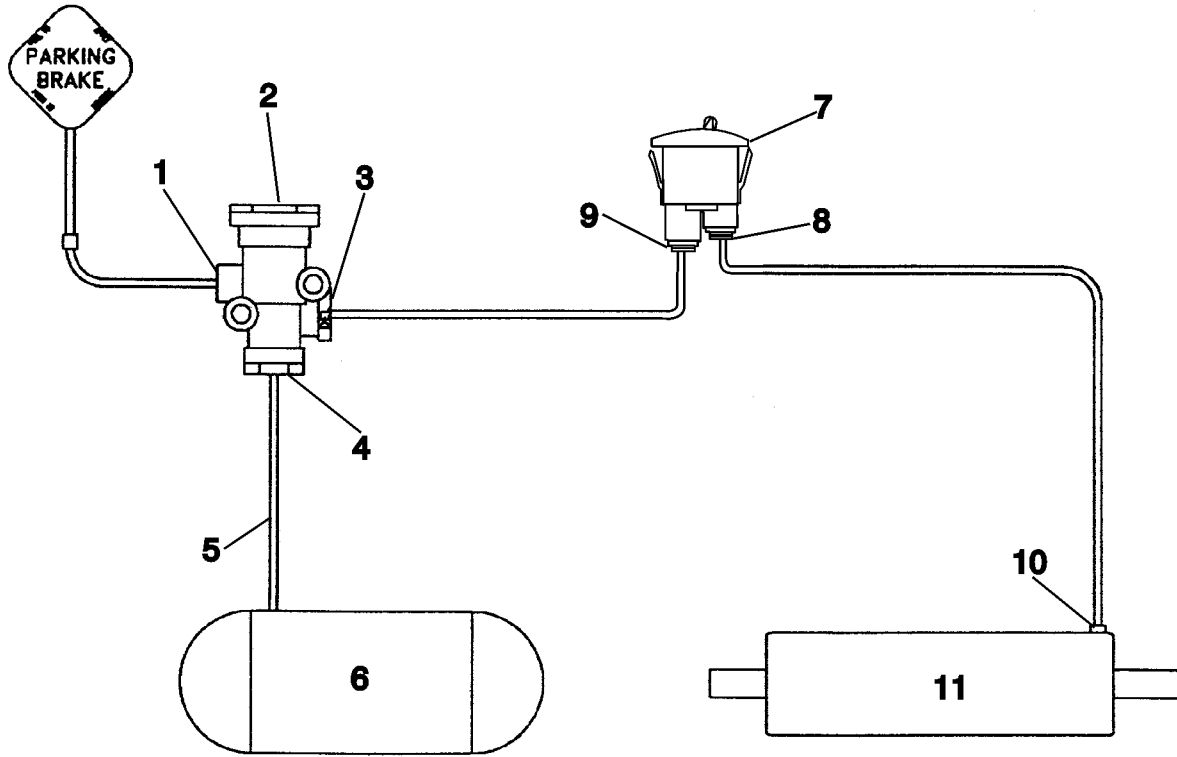
A	25.4 mm (1 in.)
B	45.21 mm (1-25/32 in.)
C	Fill, Kingpin Jaw Release Cylinder
D	762 ± 127 mm (30 ± 5 in.)
E	Off
F	7.87 mm (5/16 in.)
G	50 ± 1.52 mm (1-31/32 ± 1/16 in.)
H	44.45 mm ± 1.52 mm (1-3/4 ± 1/16 in.)
I	Supply
J	Delivery

W9000498

Note: Switch functions are only to release the Kingpin Jaw and do not relock the jaw.

Fifth Wheel Air Control System

Standard



- 1 Control Port
- 2 Inversion Valve
- 3 Delivery Port
- 4 Supply Port
- 5 Vehicle Air Supply Line
- 6 Vehicle Air Reservoir
- 7 Air Switch
- 8 Delivery Port
- 9 Supply Port
- 10 Air Cylinder Supply Port
- 11 Fifth Wheel Air Cylinder